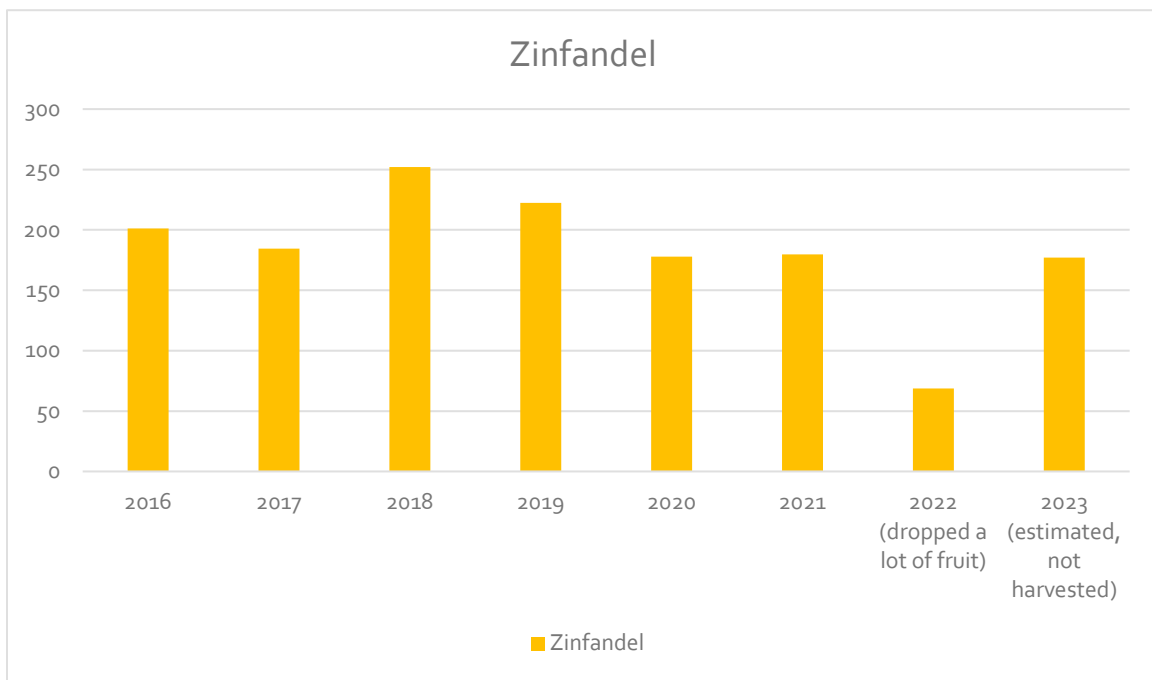


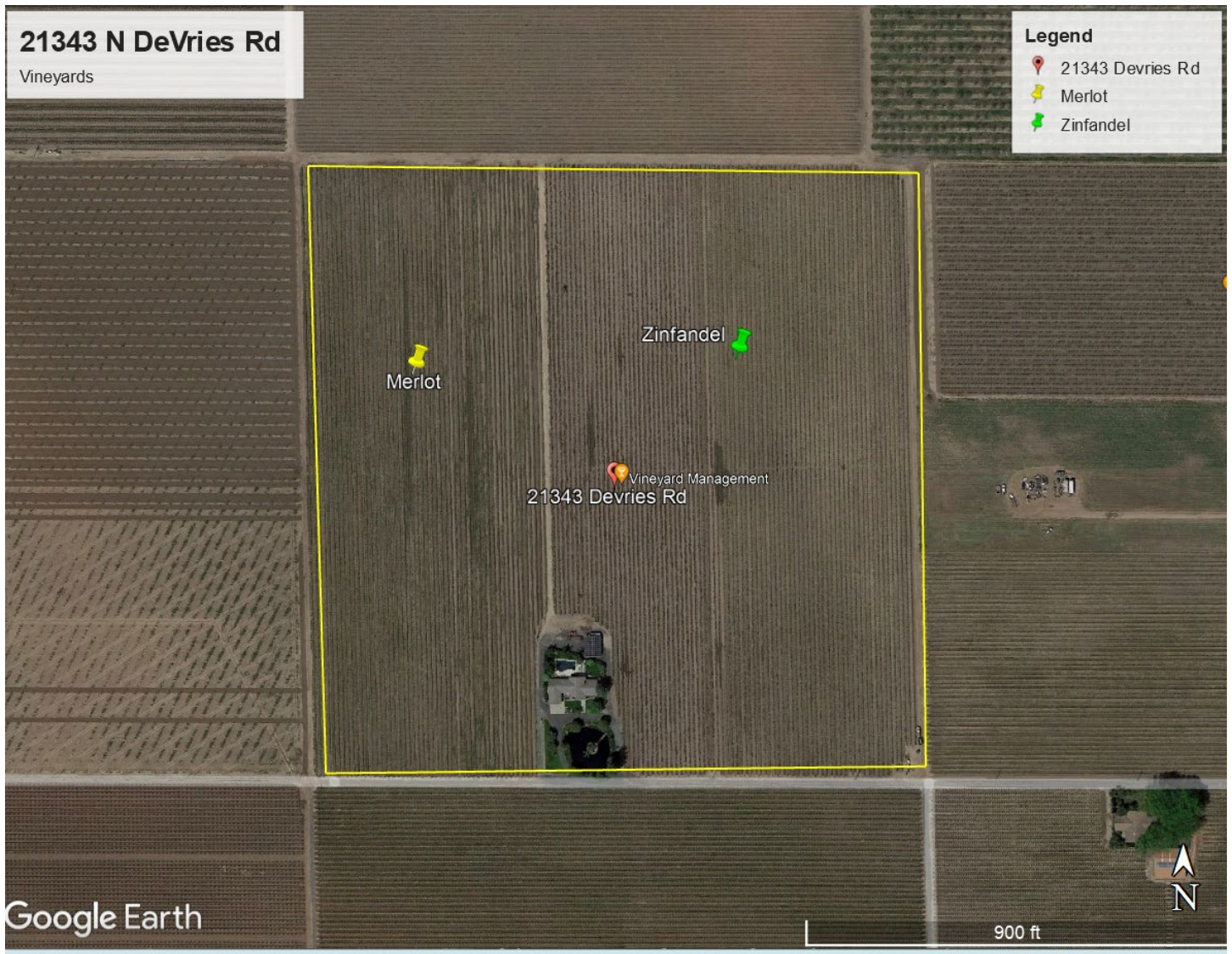
# WINE GRAPE FACT SHEET | ZINFANDEL

Variety	<b>ZINFANDEL, acquired in late 2021</b>
Appellation	Lodi, District 11
Location	21343 N DeVries Rd, Lodi, CA 95242
Soil	Kingdon fine sandy loam, Tokay fine sandy loam
Historical Tonnage:	2016: 201.20 2017: 184.60 2018: 252.00 2019: 222.40 2020: 177.90 2021: 179.75 2022: 68.81 ( <i>dropped a lot of fruit in 2022</i> ) 2023: <i>Estimated at 176 tons, not harvested.</i>



Average Tonnage:	176 Tons, or 8 tons per acre
Rootstock	5BB
Year planted	1963, interplanted and put on wire in 1991
Age	60 yrs, with interplanting at 33 years.
Spacing	10 ft x 5 ft
Trellis	Wire

Irrigation	Drip
Water Source:	Surface (Woodbridge Irrigation District), added in 2022
Harvest Method	Machine picked
Acreage	22
Farming Practice	Lodi Rules Sustainable Farming since 2015 <sup>1</sup>
Ownership and Management	Current owners have managed their own vineyards for over 18 years.
Contact Information:	Alyce Peterson, cell: 714-403-4254 or Office: 209-727-2071 Leonard Peterson, cell: 209-400-5595



<sup>1</sup> Lodi Rules certificate and PEAS report provided to winery each harvest.